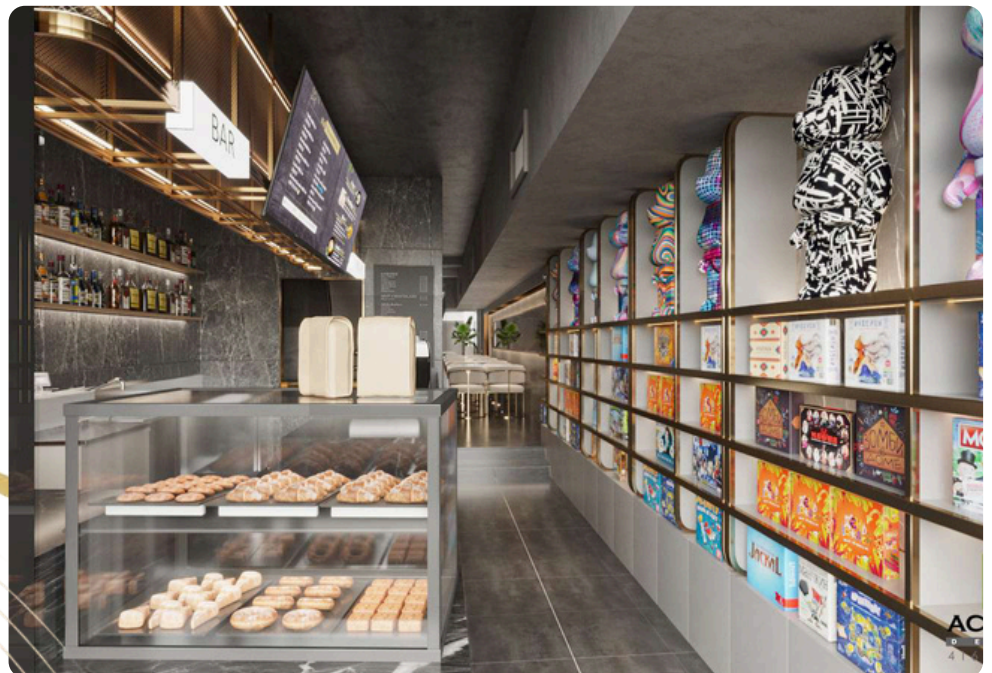




# Private Events

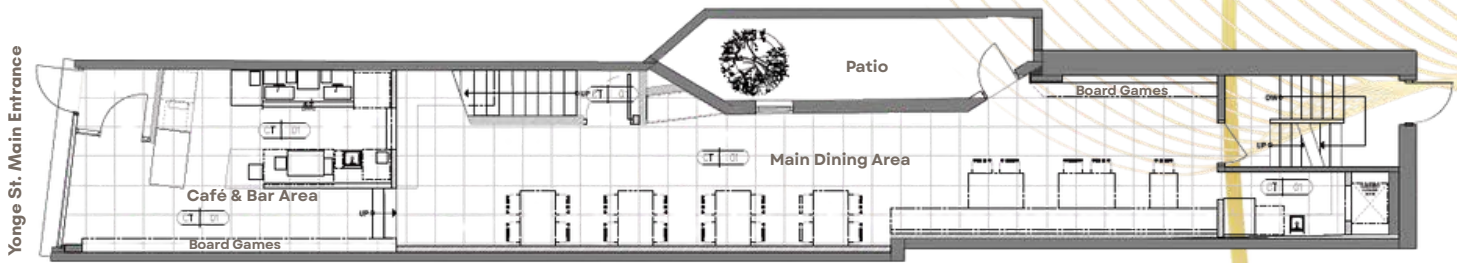
Twilight Cafe & Bar  
Midtown

[www.twilightcafe.ca](http://www.twilightcafe.ca)





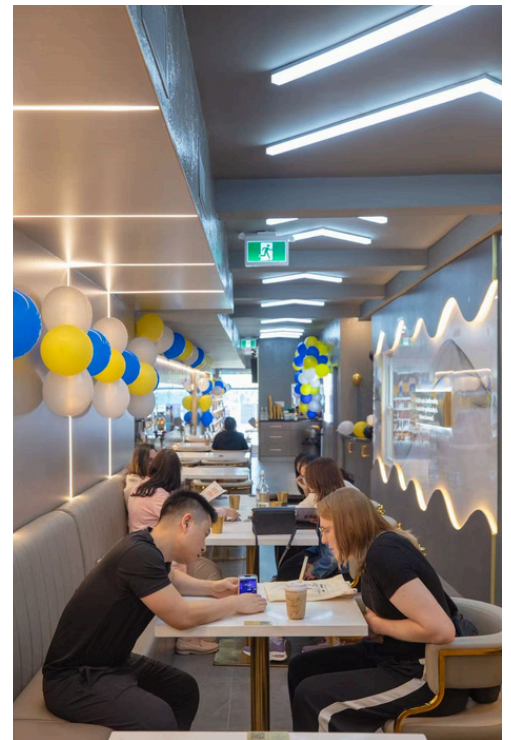
# First Floor



Enter directly from Yonge Street into the welcoming Café & Bar, where handcrafted drinks and light bites welcome you right at the door.

Across from the bar, an array of board games awaits for guests to browse and play. A few steps up lead to the Main Dining Area, with an additional Board Game Section at the back. The seasonal patio, opening Spring/Summer 2026, will offer open-air dining and drinks.

**Seating Capacity: 40 Seated | 60 Standing**



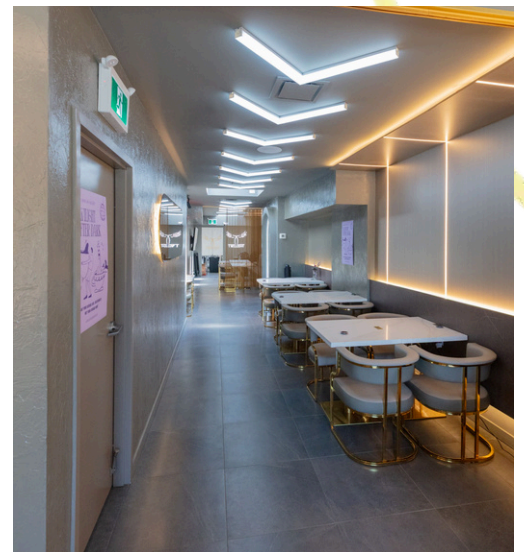


# Second Floor



Accessible via the staircase beside the main dining area on the first floor, the second floor space offers a more private and customizable setting—perfect for parties, corporate gatherings, or special occasions. Its flexible layout allows for personalized setups while maintaining Twilight's warm, social atmosphere.

**Seating Capacity: 50 Seated | 70 Standing**



## KTV Room



Located in the basement, the KTV room is a fully private space where guests can sing their favorite songs carefree.



**Seating Capacity:  
12 Seated**





# Private Events

## *Weekday Pricing*



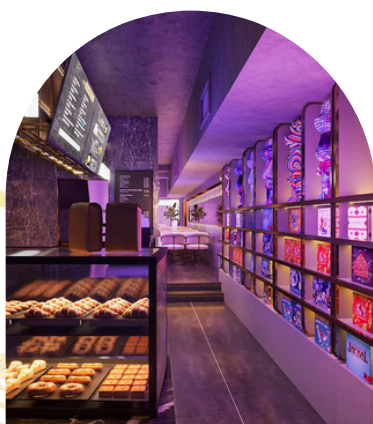
### One-Floor Package

- Suitable for maximum party size of 50
- Venue Fee: \$150/hr
- Minimum Spend of \$500 including:
  - Food Package Options per person
  - À la carte Food Menu Items can be pre-ordered
  - Does not include KTV Room
- Game Fee is waived



### Venue Package

- Suitable for maximum party size of 100
- Venue Fee: \$300/hr
- Minimum Spend of \$1,000 including:
  - Food Package Options per person
  - A La Carte Food Menu Items can be pre-ordered
  - KTV Room (\$40/hour)
- Game Fee is waived
- ✧ Option to opt out of KTV Fee. KTV will not be counted towards minimum spend



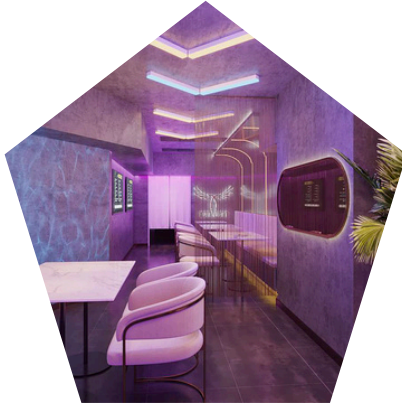
### Booking Policy

- Weekday Pricing includes Opening hours Monday - Thursday, excluding holidays
- 50% Venue Fee deposit required to secure the space
- Minimum Spend does not include Tax, Tips and Gratuities
- 15% Gratuities Applicable



# Private Events

## *Weekend Pricing*



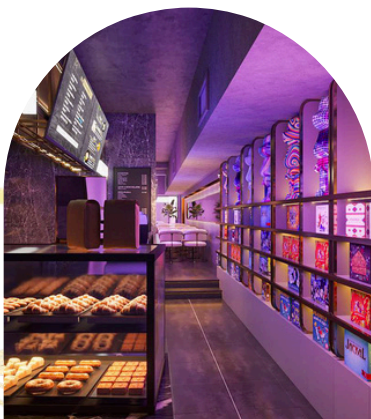
### One-Floor Package

- Suitable for maximum party size of 50
- Venue Fee: \$200/hr
- Minimum Spend of \$600 including:
  - Food Package Options per person
  - A La Carte Food Menu Items can be pre-ordered
  - Does not include KTV Room
- Game Fee is waived



### Venue Package

- Suitable for maximum party size of 100
- Venue Fee: \$400/hr
- Minimum Spend of \$1,200 including:
  - Food Package Options per person
  - A La Carte Food Menu Items can be pre-ordered
  - KTV Room (\$40/hour)
- Game Fee is waived
- ✧ Option to opt out of KTV Fee. KTV will not be counted towards minimum spend



### Booking Policy

- Weekend Pricing includes Opening hours Friday - Sunday and Holidays
- 50% Venue Fee deposit required to secure the space
- Minimum Spend does not include Tax, Tips and Gratuities
- 15% Gratuities Applicable

# SIGNATURE LUNCH MENU

All of Your Twilight Favourites Between 11AM - 5PM ET  
\$15 per guest

## MAIN COURSE

*Choice of*

### **Sandwich**

Tuna, Turkey, Salmon, Egg, Ham & Egg, or Ham & Cheese,  
served on White/Whole Wheat Bread

- or -

### **Fresh House Green Salad**

---

## DESSERT

*Choice of*

### **Brownie Special**

- or -

### **Double Chocolate Cookies**

- or -

### **Almond/Chocolate Croissants**

---

## COFFEE

### **Freshly Brewed, Any Style**

(Regular, Non-Flavoured)

---

## ADD-ON SIGNATURE SHAREABLES

(+\$7.5 per order)

*Choice of*

**Edamame, Fruit Salad,  
Tuna Rice Bowl, or French Fries**



# SIGNATURE DINNER MENU

All of Your Twilight Favourites After 5PM ET  
\$20 per guest

## MAIN COURSE

*Choice of*

### Dumplings

Pork & Seafood, Chicken & Cabbage

- or -

### Croissant Sandwich Combo\*

Classic BLT, Grilled Turkey, Tuna, or Prosciutto/Ham & Cheese

- or -

### Smoked Salmon Salad

- or -

### Twilight Turkey Salad

---

## DESSERT

*Choice of*

### Brownie Special

- or -

### Double Chocolate Cookies

- or -

### Tiramisu

---

## ANY NON-ALCOHOLIC DRINK

(+\$5 to upgrade to alcoholic drinks per order)

---

## ADD-ON SIGNATURE SHAREABLES

(+\$7.5 per order)

\*Combo includes House Garden Salad & Fries



# PREMIUM DINNER MENU

All of Your Twilight Favourites After 5PM ET  
\$25 per guest

## MAIN COURSE

*Choice of*

**Any Signature Dinner Item**

*- or -*

**Truffle Mushroom Spaghetti**

*- or -*

**Smoked Salmon Croissant Sandwich Combo\***

---

## DESSERT

*Choice of*

**Tiramisu**

*- or -*

**Original Basque**

*- or -*

**Oreo Cream/Matcha Cake Box**

---

## ANY NON-ALCOHOLIC DRINK

(+\$5 to upgrade to alcoholic drinks per order)

---

## ADD-ON PREMIUM SHAREABLES

(+\$7.5 per order)

*Choice of*

**Fried Chicken, Bolognese Cheese Nachos (Halal),  
Fruit Salad, Tuna Rice Bowl, or French Fries**

\*Combo includes House Garden Salad & Fries